

结构特点 Design features

- 内装、内流、单端面、单弹簧、非平衡型、橡胶波纹管结构；
- 动环靠橡胶波纹管的过盈量传动，结构紧凑，浮动性好；
- Internally mounted, inward leakage, single face, single spring, unbalanced, rubber bellows structure.
- Rotary ring is driven by rubber bellows, good floating.

材料 Materials(to DIN24960)

- 旋转环 Rotary Ring: B、U1、U2、Q1、Q2
- 静止环 Stationary Ring: U1、U2、Q1、Q2、V1、V2
- 辅助密封 Auxiliary Seal: P、E、V
- 弹簧及其他结构件材料 Spring and Other Parts: F、G



适用范围 Operating limits

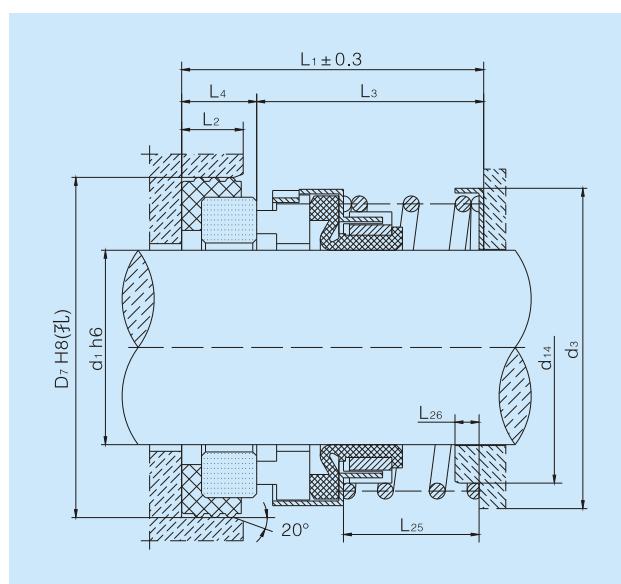
- 压力 Pressure: $\leq 1.0\text{MPa}$
- 温度 Temperature: $-20\sim 150^{\circ}\text{C}$
- 线速度 Speeds: $\leq 10\text{m/sec}$

用途 Applications

适用于冷却泵、离心泵、潜水泵、工业泵等设备。
Used in auto-cooling pumps, centrifugal pumps, submersible pumps and general industrial pumps.

介质 Medium

油类、水及其它弱腐蚀性溶液。
Oil, water and other weak corrosive fluid.



型号 Model	d ₁	d ₃	D ₇	d ₁₄	L ₁	L ₂	L ₃	L ₄	L ₂₅	L ₂₆
CN BIA-14	14	27.0	30	22.4	23.7	4.5	18.7	5.0	9.7	2.5
CN BIA-16	16	28.5	32	23.0	26.0	4.5	21.0	5.0	12.0	2.5
CN BIA-18	18	30.5	35	25.5	30.0	6.0	22.5	7.5	13.0	2.5
CN BIA-20	20	31.8	35	26.0	29.0	6.5	21.0	8.0	11.5	3.0
CN BIA-25	25	39.0	40	34.0	33.5	6.5	25.5	8.0	15.0	3.0
CN BIA-28	28	42.0	43	36.5	33.5	6.5	25.5	8.0	15.0	3.0
CN BIA-30	30	44.0	45	38.5	34.5	7.5	25.5	9.0	15.0	3.0
CN BIA-32	32	46.0	48	40.0	42.5	7.5	33.5	9.0	21.0	4.5
CN BIA-33	33	47.0	48	40.5	42.5	7.5	33.5	9.0	21.0	4.5
CN BIA-35	35	49.0	50	42.5	42.5	7.5	33.5	9.0	21.0	4.5
CN BIA-38	38	54.0	56	46.5	42.5	7.5	33.5	9.0	21.0	4.5
CN BIA-40	40	56.0	58	48.0	42.5	7.5	33.5	9.0	21.0	4.5
CN BIA-43	43	59.0	61	51.0	46.0	8.0	36.5	9.5	24.0	5.5
CN BIA-45	45	61.0	63	52.5	47.5	8.0	38.0	9.5	24.0	5.5
CN BIA-48	48	64.0	66	55.5	47.5	8.0	38.0	9.5	24.0	5.5
CN BIA-50	50	66.0	70	57.0	47.5	8.0	38.0	9.5	24.0	5.5
CN BIA-53	53	69.0	73	60.0	50.5	8.0	41.0	9.5	26.0	6.0
CN BIA-55	55	71.0	75	62.0	50.5	8.0	41.0	9.5	26.0	6.0
CN BIA-58	58	78.0	78	68.0	51.5	8.0	42.0	9.5	26.0	6.0
CN BIA-60	60	80.0	80	70.0	51.5	8.0	42.0	9.5	26.0	6.0
CN BIA-70	70	90.0	92	80.0	56.0	9.5	45.0	11.0	28.0	6.5
CN BIA-80	80	104.0	104	90.0	67.0	10.0	55.0	12.0	37.0	8.0
CN BIA-85	85	108.0	109	95.0	76.2	10.0	64.2	12.0	48.0	8.0
CN BIA-90	90	113.0	114	100.0	78.2	10.0	66.2	12.0	50.0	8.0